

# KNIGHTLY NEWS



KELLOGG  
MIDDLE  
SCHOOL

NOVEMBER 2022

CHECK OUT OUR  
WEBSITE!

click here



click here

FOLLOW US ON  
FACEBOOK!

## CANDY DONATION

**Got  
Candy?**

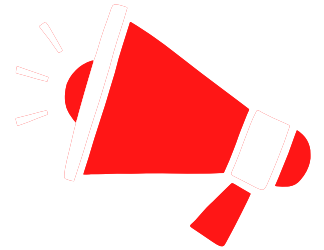
**WE WANT IT!**

THE PTSA WILL HAVE A CANDY  
DONATION BOX IN THE OFFICE  
STARTING THE DAY AFTER  
HALLOWEEN!  
SEND YOUR UNOPENED CANDY IN  
WITH YOUR STUDENT THE FIRST  
TWO WEEKS OF NOVEMBER.

KELLOGG STAFF WILL REALLY APPRECIATE  
YOUR SWEET DONATION!

## VOLUNTEER NEEDS

**DO YOU LOVE TO  
PLAN PARTIES  
AND BIG EVENTS?  
WE NEED YOU!**



We're looking for 2-4 people to help coordinate and execute a super fun Trivia/Auction event to help us raise funds to support our students and staff. You will be supported by other amazing parent volunteers, but we just need a few people to lead the charge!

Please reach out to  
Rachelle Mitchell:  
[fundraising@kelloggptsa.org](mailto:fundraising@kelloggptsa.org)

*keep reading...*

## SHARE THE WARMTH



SHARE THE WARMTH WITH  
SHORELINE &  
LAKE FOREST PARK STUDENTS

# Coat

## DRIVE

*November 14th-30th*

### NEEDED:

- **NEW** or **GENTLY USED** warm coats
- **Hoods preferred**
- **Sizes 4T-16 and Adult S-3XL**

TO DONATE YOUR NEW  
OR GENTLY USED COATS THERE WILL  
BE A BIN BY THE FRONT ENTRANCE OF  
KELLOGG

For more information:  
[WWW.SHORELINEPTA.ORG](http://WWW.SHORELINEPTA.ORG)  
/THE-WORKS



Questions? Contact:  
community-  
outreach@kelloggpta.org

## MEMBERSHIP

**It's not too late to join  
Kellogg PTSA and support  
all of the programs and  
events that the PTSA  
sponsors including:**

- ★ Providing additional classroom supplies
- ★ Funding for after school programs and field trips
- ★ Monthly staff appreciation events
- ★ And much more!

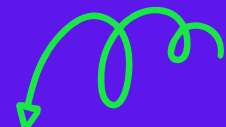
**Join today  
using  
the QR code  
OR click:**



## **MEMBERSHIP**



there's more...  
keep reading!





# ***Supporting Teen Anxiety***

Join us for special guest speaker David Lewis, the Director/Program manager of Behavioral Health Services of Seattle Public Schools.

This event is open to all middle school families/caregivers and will be recorded for those who are unable to attend.

Wednesday  
November 9th  
6:30-8:00 PM

**KELLOGG MIDDLE SCHOOL  
COMMONS/CAFETERIA**

16045 25th Ave NE  
Shoreline, WA 98155

David Lewis, Psy.D., LMHC is a clinical Psychologist and an Affiliate Professor at the University of Washington. David lectures across various departments including Behavioral Sciences, Social Work, Nursing, Adolescent Medicine, and Education. He has most recently been the Director and Program Manager of Behavioral Health Services for Seattle Public Schools, and has worked with school districts and organizations across the country.



Contact Missy Liu to get a copy of the recording or to submit any pre-event questions for Mr. Lewis.

[Mentalhealth@shorelinepta.org](mailto:Mentalhealth@shorelinepta.org)



Sponsored by  
The Shoreline PTA  
Council Mental  
Health Committee



FOR YOUTH DEVELOPMENT®  
FOR HEALTHY LIVING  
FOR SOCIAL RESPONSIBILITY



Food, Toys,  
Teen Gifts

**Holiday  
Baskets**

# Holiday Baskets

## 2022 Registration Information

**Gift pick up at the Y: December 10th, 2022**

Holiday Baskets at the YMCA provides Holiday support to Shoreline School District families, in partnership with local agencies

**Registration is open November 1st - 18th**

**There are two ways to register:**



**1**

**REGISTER ONLINE**

by clicking here and filling out the form

**OR SCAN THIS CODE:**



**OR VISIT THIS SITE:**

<https://forms.office.com/r/T9mqnRn6HA>



**2**

Contact your family advocate or your school's front office and they will help you through online registration or language translation

**Thank you to our partners!**

Dale Turner Family YMCA  
19290 Aurora Ave N  
Shoreline, WA 98133

